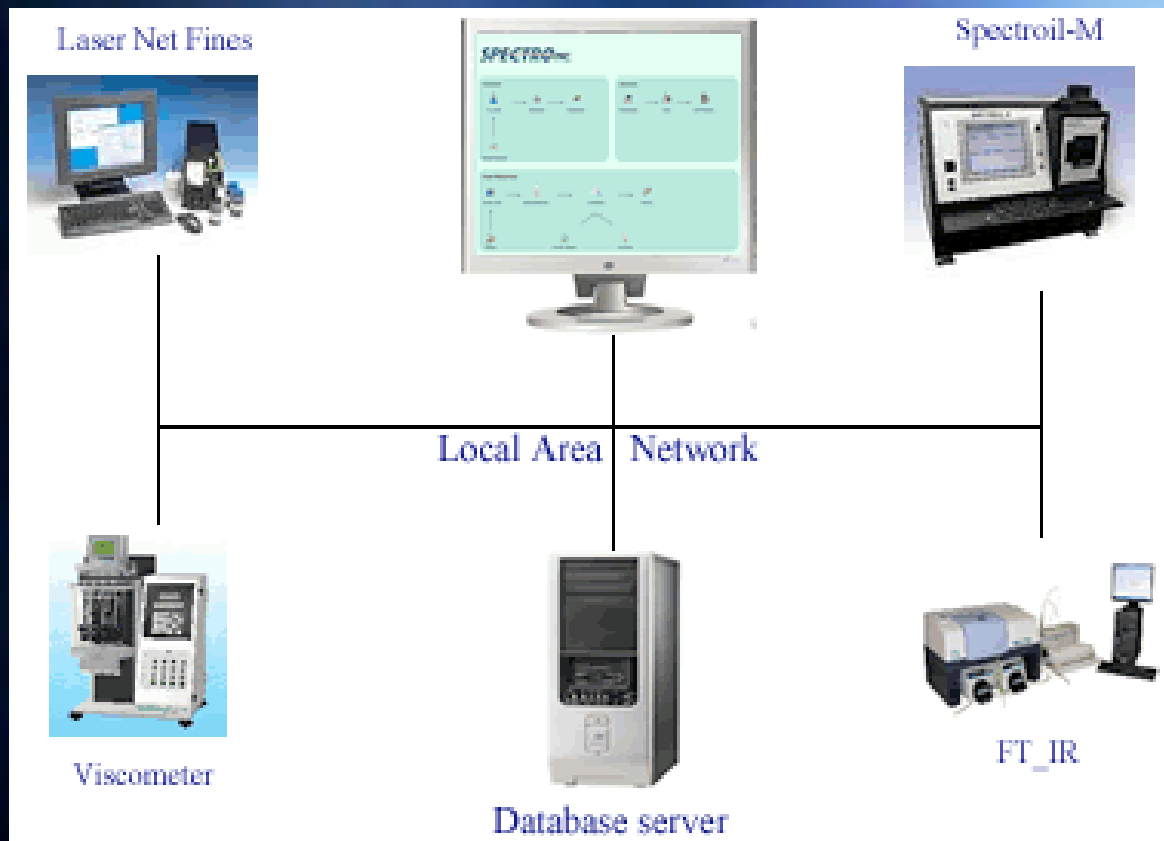




Laboratory Information Management System

*"Designed and built specifically for oil analysis laboratories"*

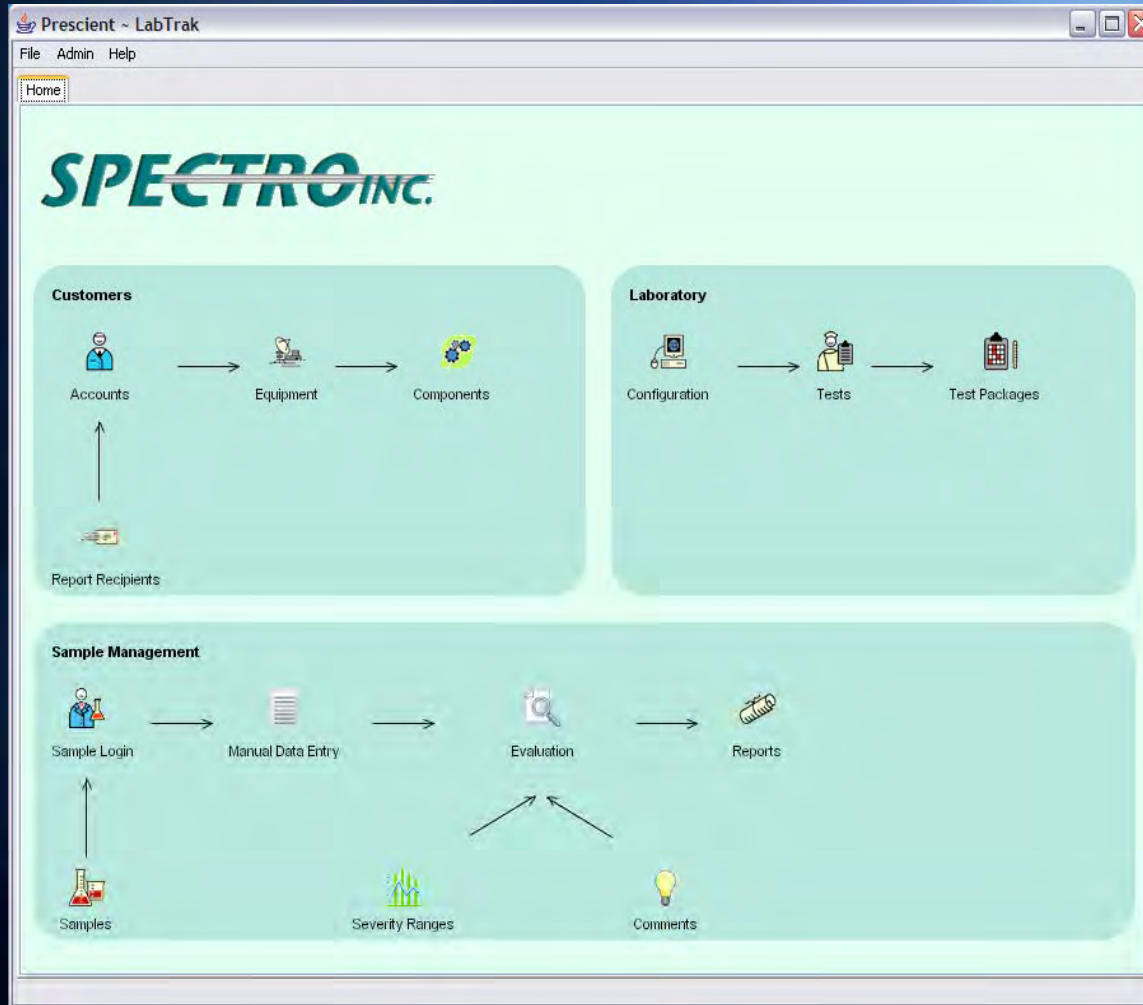




- ⊕ Operates on one or multiple computers on your local area network
- ⊕ Automatically retrieves data from Spectro laboratory instruments
- ⊕ Accepts data manually from non-Spectro instruments or tests



# Home Page Navigation



- ✦ The Home Page allows quick navigation to each major function and is always available in the first tab
- ✦ Organized in functional groups with process flow clearly visible
- ✦ Each major function opens in a new tab making navigation easy



# Customer Accounts

Prescient - LabTrak

File Help

Home Accounts

Account Number

Account Name

City  State

Show

**Accounts**

Account Number	Name	City	State
123456	Hepler Global	Marietta	GA
123456-4135	Hepler Enterprises	Marietta	GA

Edit Account Hepler Enterprises

Account Number

Name  E-Mail

Address  Phone

City  State  Zip  Country

Report Recipients

Name	Delivery Type
James Hepler	Mail

Equipment

Equipment Name	Manufacturer	Model
A39	Volvo	A35C
A44	Volvo	A35C
A47	Volvo	A35D
A50	Volvo	A35D
A52	Volvo	A40D
ADT31	Caterpillar	D400D

Special Handling Instructions

- ⊕ Accounts may be searched, created, removed and reactivated with ease
- ⊕ Account information includes equipment and report recipients
- ⊕ Email reports are automatically created and sent after report evaluation and approval



# Equipment

Prescient - LabTrak

File Help

Home Accounts **Equipment**

Account Number  Account Name

Equipment Name

Type  Manufacturer  Model

Show Active

### Equipment

Account Number	Account Name	Equipment Name	Manufacturer	Type	Model
123456-4135	Hepler Enterprises	A39	Volvo	Haul Truck-Articulated	A35C
123456-4135	Hepler Enterprises	A44	Volvo	Haul Truck-Articulated	A35C
123456-4135	Hepler Enterprises	A47	Volvo	Haul Truck-Articulated	A35D
123456-4135	Hepler Enterprises	A50	Volvo	Haul Truck-Articulated	A35D
123456-4135	Hepler Enterprises	A52	Volvo	Haul Truck-Articulated	A40D
123456-4135	Hepler Enterprises	ADT31	Caterpillar	Haul Truck-Articulated	D400D
123456-4135	Hepler Enterprises	ADT32	Caterpillar	Haul Truck-Articulated	D400D
123456-4135	Hepler Enterprises	ADT44	Caterpillar	Haul Truck-Articulated	D400E II
123456-4135	Hepler Enterprises	B45	Bell	Haul Truck-Articulated	B40A
123456-4135	Hepler Enterprises	B66	Bell	Haul Truck-Articulated	B50D
123456-4135	Hepler Enterprises	CD19	Caterpillar	Dozer-Track	D9R
123456-4135	Hepler Enterprises	CD26	Caterpillar	Dozer-Track	D10R
123456-4135	Hepler Enterprises	CD29	Caterpillar	Dozer-Track	D11R
123456-4135	Hepler Enterprises	CDT23	Caterpillar	Haul Truck-Rigid	777D
123456-4135	Hepler Enterprises	DR17	Ingersol Rand	Compressor	DM30 HP800
123456-4135	Hepler Enterprises	DT12	Caterpillar	Haul Truck-Rigid	773D
123456-4135	Hepler Enterprises	ET12	Mercedes-Benz	Straight Truck	3331 ACTROS
123456-4135	Hepler Enterprises	G66	Caterpillar	Grader	140G
123456-4135	Hepler Enterprises	L62	Caterpillar	Loader	966F
123456-4135	Hepler Enterprises	L67	Caterpillar	Loader	950G
123456-4135	Hepler Enterprises	L992	Caterpillar	Loader	992C
123456-4135	Hepler Enterprises	LP40	Lister	Generator	Petter
123456-4135	Hepler Enterprises	SDV10	Toyota	Diesel Pickup	2.4D
123456-4135	Hepler Enterprises	SDV7	Toyota	Diesel Pickup	HILUX 3.0LD

Edit Equipment ADT32

Name  Customer Hepler Enterprises

Type  Serial Number

Manufacturer  Model

Application Type  Application Sub-Type

### Components

Name	Type	Manufacturer	Model	Serial N...	
ADT32ENG	ENGINE, Diesel: Liquid-C...	Caterpillar	3406B	ADT32E...	<input type="button" value="New"/>
ADT32R\MID\...	GEAR, Final Drive			ADT32...	<input type="button" value="Edit"/>
					<input type="button" value="Remove"/>

⊕ Equipment is assigned to accounts and may be searched, created, removed and reactivated with ease

⊕ Equipment Detail includes Manufacturer, Application, and Individual Components



# Components

Prescient - LabTrak

File Help

Home Accounts Equipment Components

Account Number  Account Name

Equipment Name

Component Name

Component Type  Manufacturer  Model

**Components**

Account Number	Account Name	Equipment Name	Component Name	Component Type	Manufacturer	Model	Test Package
123456-4135	Hepler Enterprises	A39	A39LFR\FDR	GEAR, Final Drive			
123456-4135	Hepler Enterprises	A44	A44FR\DIFF	GEAR, Differential			
123456-4135	Hepler Enterprises	A44	A44TRANS	TRANS, AutoPow...			
123456-4135	Hepler Enterprises	A47	A47FR\DIFF	GEAR, Differential			
123456-4135	Hepler Enterprises	A47	A47R\FR\FDR	GEAR, Final Drive			
123456-4135	Hepler Enterprises	A50	A50R\FR\FDR	GEAR, Final Drive			
123456-4135	Hepler Enterprises	A52	A52HYD	HYDRAULIC			
123456-4135	Hepler Enterprises	ADT31	ADT31ENG	ENGINE, Diesel. Liq...	Caterpillar	3406B	
123456-4135	Hepler Enterprises	ADT32	ADT32ENG	ENGINE, Diesel. Liq...	Caterpillar	3406B	
123456-4135	Hepler Enterprises	ADT32	ADT32R\MID\FDR	GEAR, Final Drive			
123456-4135	Hepler Enterprises	ADT44	ADT44ENG	ENGINE, Diesel. Liq...	Caterpillar	3406E	
123456-4135	Hepler Enterprises	B45	B45ENG	ENGINE, Diesel. Liq...	Atlantis Diesel Engr...	442TI	
123456-4135	Hepler Enterprises	B66	B66R\MID\FDR	GEAR, Final Drive			
123456-4135	Hepler Enterprises	B66	B66TR\BOX	GEAR			
123456-4135	Hepler Enterprises	CD19	CD19ENG	ENGINE, Diesel. Liq...	Caterpillar	3408E	
123456-4135	Hepler Enterprises	CD26	CD26HYD	HYDRAULIC			
123456-4135	Hepler Enterprises	CD26	CD26TRANS	TRANS, AutoPow...			
123456-4135	Hepler Enterprises	CD29	CD29ENG	ENGINE, Diesel. Liq...	Caterpillar	3508HEUI	
123456-4135	Hepler Enterprises	CDT23	CDT23ENG	ENGINE, Diesel. Liq...	Caterpillar	3508E	
123456-4135	Hepler Enterprises	DR17	DR17ENG	ENGINE, Diesel. Liq...	Caterpillar	3406	
123456-4135	Hepler Enterprises	DT12	DT12ENG	ENGINE, Diesel. Liq...	Caterpillar	3412E	
123456-4135	Hepler Enterprises	ET12	ET12ENG	ENGINE, Diesel. Liq...	Mercedes-Benz		
123456-4135	Hepler Enterprises	G66	G66ENG	ENGINE, Diesel. Liq...	Caterpillar	3306DIT	
123456-4135	Hepler Enterprises	L62	L62ENG	ENGINE, Diesel. Liq...	Caterpillar	3306	

**Edit Component B45ENG**

Account: Hepler Enterprises

Equipment: B45

Component Name:

Component Type: ENGINE, Diesel. Liquid-Cooled

Component Manufacturer: Atlantis Diesel Engines

Component Model: 442TI

Serial Number:

Sump Capacity:

Lube Manufacturer: Engen Lube Brand: Dieselube 700 Super Lube Grade: 15W40

Filter Manufacturer: Filter Brand: Filter Rating:

Test Package: General Test

Samples

Lab Sample ID	Analysis Date	Severity	Status
1517683	08-27-2003	0	Severity Calculated
1913374	08-02-2004	4	Severity Calculated
1913447	08-25-2004	4	Severity Calculated
2027539	11-26-2004	4	Severity Calculated
2460596	06-19-2006	0	Severity Calculated
2562467	06-30-2006	0	Severity Calculated

- ⊕ Rich component detail, complete with assigned Test Package
- ⊕ Components can easily be transferred to other equipment (*e.g. an engine is moved*)



# Test Packages

Package Name	Add New
Diesel ENG	Edit
HYD Package	
Minimum Package	
Mining ENG Package	
Transport ENG	

- ⊕ Test Packages simplify processing samples in the laboratory
- ⊕ Unique tests can be defined and grouped into custom packages, assignable to specific components



# Sample Login

The screenshot shows the 'Sample Login' form in the 'Prescient - LabTrak' application. The form is titled 'Sample Login' and includes the following fields and controls:

- Tray ID:** Text box containing 'AB'
- Lab Sample ID:** Text box containing '0708210002'
- Account Name:** Drop-down menu with 'Hepler Enterprises' selected
- Account Number:** Drop-down menu with '123456-4135' selected
- Equipment Name:** Drop-down menu with 'A39' selected
- Component Name:** Drop-down menu with 'A39LVFRFDR' selected
- Test Package:** Drop-down menu with 'General Test' selected and a 'Create Test Package' button
- Sample Date (mm-dd-yyyy):** Text box containing '08-15-2007'
- Received Date:** Text box containing '08-21-2007 02:04:47 PM'
- Lube Time/Distance:** Text box containing '300' and a 'Hours' drop-down menu
- Component Time/Distance:** Text box containing '1240' and a 'Hours' drop-down menu
- Lube Manufacturer:** Drop-down menu with 'Engen' selected
- Lube Brand:** Drop-down menu with 'Gearlube EP' selected
- Lube Grade:** Drop-down menu with '85W140' selected
- Lube Changed:**
- Filter Changed:**
- Lube Added:** Text box containing '0' and a 'Gallons' drop-down menu
- Lab Notes:** Text area containing '\$ \$'

At the bottom of the form, there are four buttons: 'End Batch', 'Save and New', 'Save', and 'Close'.

- ✦ Samples are logged quickly with auto-fill and drop-down selection
- ✦ A Batch Report is automatically created, listing and detailing samples scheduled for each required test
- ✦ Batch size is variable, specified by the User, accommodating the flow of samples through the laboratory for best efficiency



# Data Entry

Tray  Refresh

Sample ID	Complete	FTIR	LaserNet Fines	Particle Count	Spectrometer	VIS100	VIS40
0704120001	✓				✓		
0703200006							
0704110001							
0704030004							
0704060043		✓					✓
0704170013							
0705160001							

Name	Value
<b>Sample ID</b>	<b>0704060043</b>
PC > 4 mic	
PC > 6 mic	
PC >14 mic	
PC >21 mic	
PC >38 mic	
PC >70 mic	

- ⊕ Data Entry display clearly shows status of each tray (batch) as it moves through the laboratory
- ⊕ Automated Spectro instruments automatically download data as samples are processed
- ⊕ User may enter data manually for non-automated tests
- ⊕ Completed samples are available for Evaluation



# Evaluation List

Prescient - LabTrak

File Admin Help

Home Evaluation List Evaluation Recipients Accounts Samples Manual Data Entry

Component Type: All

Search Reset

Evaluation

Evaluation List

Lab Sample ID	Account Name	Equipment Name	Component Name	Type	Manufacturer	Model	Severity
1765182	Hepler Industries	RB10	ENG	ENGINE, Diesel, Liquid-Cooled	Atlantis Diesel En...	236DI	0
1852519	Hepler Industries	RB10	ENG	ENGINE, Diesel, Liquid-Cooled	Atlantis Diesel En...	236DI	0
1855843	Hepler Industries	T18	ENG	ENGINE, Diesel, Liquid-Cooled	Mercedes-Benz	OM352	0
2021150	Hepler Industries	RB10	ENG	ENGINE, Diesel, Liquid-Cooled	Atlantis Diesel En...	236DI	0
2067465	Hepler Industries	T18	ENG	ENGINE, Diesel, Liquid-Cooled	Mercedes-Benz	OM352	0
2084394	Hepler Industries	MDT26	R\FR\W\H	BEARING	Caterpillar	773D	0
2142031	Hepler Industries	RB10	ENG	ENGINE, Diesel, Liquid-Cooled	Atlantis Diesel En...	236DI	0
2292262	Hepler Industries	T18	ENG	ENGINE, Diesel, Liquid-Cooled	Mercedes-Benz	OM352	0
2324022	Hepler Industries	CD23	LVFDR	GEAR, Final Drive	Caterpillar	D10R	0
2324176	Hepler Industries	MDT26	ENG	ENGINE, Diesel, Liquid-Cooled	Caterpillar	3412E	0
2345363	Hepler Industries	MDT26	L\FR\W\H	BEARING	Caterpillar	773D	0
2345365	Hepler Industries	MDT26	R\FR\W\H	BEARING	Caterpillar	773D	0
2345377	Hepler Industries	MDT26	LVFDR	GEAR, Final Drive	Caterpillar	773D	0
2364995	Hepler Industries	CD23	RVFDR	GEAR, Final Drive	Caterpillar	D10R	0
2388706	Hepler Industries	CD23	TRANS	TRANS, Auto/Powershift	Caterpillar	D10R	0
2407366	Hepler Industries	FB9	ENG	ENGINE, Diesel, Liquid-Cooled	Mercedes-Benz	1113	0
2431081	Hepler Industries	DV283	ENG	ENGINE, Diesel, Liquid-Cooled	Toyota	HILUX 3.0L	0
2437555	Hepler Industries	DV284	ENG	ENGINE, Diesel, Liquid-Cooled	Toyota	HILUX 3.0L	0
2438083	Hepler Industries	SDT35	RVFDR	GEAR, Final Drive	Caterpillar	773E	0
2438101	Hepler Industries	SDT35	TRANS	TRANS, Auto/Powershift	Caterpillar	773E	0
2438106	Hepler Industries	SDT35	HYD	HYDRAULIC	Caterpillar	773E	0
2438110	Hepler Industries	SDT35	L\FR\W\H	BEARING	Caterpillar	773E	0
2438111	Hepler Industries	SDT35	DIFF	GEAR, Differential	Caterpillar	773E	0
2438116	Hepler Industries	SDT35	R\FR\W\H	BEARING	Caterpillar	773E	0
2438119	Hepler Industries	SDT35	POWSTE	HYDRAULIC, Power Steering	Caterpillar	773E	2

Edit

- ⊕ Completed samples are automatically assigned Severity values for each test element, e.g Fe, Cu, Al, based on User-specifiable limits



# Severity Ranges

**New Component Severity Range**

Component Type  
BEARING, Pedestal

Component Manufacturer    Component Model

Application Type

Test  
Particle Count

Component Severity Ranges

Test Result	Hi Notable	Hi Abnormal	Hi Severe	Lo Notable	Lo Abnormal	Lo Severe
PC > 4 mic						
PC > 6 mic						
PC >14 mic						
PC >21 mic						
PC >38 mic						
PC >70 mic						

Save and New    Save    Close

- ✦ Data can be rated by Severity: Notable, Abnormal, and Severe for both "Hi" and "Lo" limits
- ✦ User defines the limits for each test. A 'copy' feature, followed by editing, allows quick construction of limits tables for similar components
- ✦ Limits can be specific to Component Type, Manufacturer, Model, and Application as desired



# Evaluation

Prescient - LabTrak

File Help

Home Evaluation List Evaluation

**Critical**

Equip Name DR7 Comp Name DR7TRIGBX Lube Mfr Engen Filter Mfr Account Hepler Industry  
Equip Type Drill Comp Type GEAR Lube Brand Gearlube HP Filter Brand Application OFF-HIGHWAY  
Equip Mfr/Model Tamrock PANTERA 800 Comp Mfr/Model Grade 75W90 Filter Type  
Equip Serial # DR7TRIGBX

Select a Comment (Press Enter to Add Comment):

Code	Description
10FERROOR	Performing Analytical Ferrography on this sample may help clarify these results
10FERROOR	Performing Analytical Ferrography on this sample may help clarify these results
10METALBFFD	Aluminum may represent thrust or bearing cage material, or simply contamination, as applicable
10METCR	Chromium suggests plating on steel alloy, or if applicable, stainless steel if/when nickel is present
4042X	Bearings or Gears/Shafts
41XSOFTOR	Conduct external, non-invasive inspections, such as clearances or endplay, and similar diagnostics

Recalculate Severity Evaluation Complete

View: Last 4 Samples Wear

Rec'd	12/14/05	11/05/02	04/17/02	01/09/02
Sample	12/08/05	10/18/02	04/14/02	01/06/02
Lab ID	2323427	1413826	1290695	1087954
Lube T/D	3005 hr	785 hr	828 hr	208 hr
Comp T/D	10996 hr	6928 hr	6143 hr	5523 hr
Lube/Filt	Y/N	Y/N	Y/N	N/N
Fe	498	81	295	77
Cr	33	4	40	10
Mo	1	0	1	0
Al	59	6	59	11
Ni	1	1	1	0
Cu	1	0	1	1
Pb	0	0	1	0
Sn	0	0	2	0

Rec'd	12/14/05	11/05/02	04/17/02	01/09/02
Sample	12/08/05	10/18/02	04/14/02	01/06/02
Lab ID	2323427	1413826	1290695	1087954
Lube T/D	3005 hr	785 hr	828 hr	208 hr
Comp T/D	10996 hr	6928 hr	6143 hr	5523 hr
Lube/Filt	Y/N	Y/N	Y/N	N/N
VIS 40	326	369	344	340

Rec'd	12/14/05	11/05/02	04/17/02	01/09/02
Sample	12/08/05	10/18/02	04/14/02	01/06/02
Lab ID	2323427	1413826	1290695	1087954
Lube T/D	3005 hr	785 hr	828 hr	208 hr
Comp T/D	10996 hr	6928 hr	6143 hr	5523 hr
Lube/Filt	Y/N	Y/N	Y/N	N/N
PQ Index	371	43	255	67

Test data are displayed with color-coded severity, which can be overridden by the Evaluator

Evaluator assigns overall sample severity and comments, resident in a User-defined library



# Comments Library

Code

Description

Show Active Search Reset

**Comments**

Code	Description
10DIAG	Perform DIAGNOSTICS checks
10OHAUL	Contaminants may be residual from this component's recent repair or overhaul
10SAT	No action recommended - all values are satisfactory
10X	Consider inspecting this component for abnormal wear
31DIAG	Perform cylinder region DIAGNOSTICS checks
40DIAG	Perform DIAGNOSTICS checks, such as oil pump flow pressure or crank endplay
40X	Inspect BEARINGS for wear
41DIAG	Perform DIAGNOSTICS checks
41ENDPLAY	Check crankshaft end play
41X	Inspect Bushings/Thrusts for wear
42X	Inspect for Gear or Shaft wear
44X	Inspect for Clutch facing wear or mis-alignment
45DIAG	Perform pump DIAGNOSTICS checks
47X	Inspect Seal(s) for leakage or wear
50	Lube Suitable for continued use through next normal sampling interval
50CF	CHANGE FILTER, if applicable
50CL	CHANGE LUBE
50CLF	CHANGE LUBE and, if applicable,CHANGE FILTER
50ENV	The unit's operating environment may be significantly contributing to this data pattern
50FLUSH	FLUSH SYSTEM using the lubricant normally used in this sump, or product that is equally compatible, or recommended by your suppliers
50HANDLING	Check oil handling and storage methods for contamination entry
50PFILT	Use off-line or portable filtration to reduce contamination in order to retain the lube for continued service
50SAMPLING	Check sampling and sample handling methods - be certain that sample containers are not contaminated
50SHEAR	Lube may have sheared significantly, resulting in lower viscosity (usually VI improver breakdown, but occasionally straight grade lubes a...

Add New Edit Activate Remove

⊕ Complete flexibility in creating and managing comments



# Reports

### Sample Analysis Report

Equipment: EQ1      Component: ENG  
Mfr/Model: Manitowoc F322      Mfr/Model: Mack 213  
Serial:      Serial:  
Type: James Mobile      Type: ENGINE, Diesel-Cooled  
Send To: James Automotive  
515 Crossville Rd  
Attn: James Hepler

Sample Rating: **Normal**      Notes:

**Comments**  
Upward iron trend is ALARMING, suggesting close monitoring action  
VISCOSITY is evaluated as MODERATELY HIGH

Fe	Cr	Mo	Al	Ni	Cu	Pb	Sr	Si	Na
<b>165</b>	0	0	0	0	0	<b>129</b>	0	0	0
In	As	Li	S	Sb	Ag	Tl	Co	Mn	Cd
0	0	0	0	0	0	0	0	0	0
VIS-40	VIS-100	VI	Fuel Dil	Soot	IR-Ox	IR-Nit			
97.98	37.3	397.0							
AN664	AN974	BN2896	BN4379	Ph	ISO Code	PQ			
Particles (microns):	>4	>6	>14	>21	>38				
LNF: Cutting	Non-Metallic	Fatigue	Sliding	AS40					

Key: **Bold** = Abnormal      **Bold/Italics** = Severe

### Sample Analysis Report

Equipment: EQ1      Component: ENG  
Mfr/Model: Manitowoc F322      Mfr/Model: Mack 213  
Serial:      Serial:  
Type: James Mobile      Type: ENGINE, Diesel-Cooled  
Send To: James Automotive  
515 Crossville Rd  
Attn: James Hepler

**Laser Net Fines**

Fatigue Particles

Sliding Particles

Water Bubbles

### Sample Analysis Report

**SPECTRO INC.**  
**Prescient-LabTrak**

Equipment: EQ1      Component: ENG      Lube Mfg: Chevron      Filter Mfg:  
Mfr/Model: Manitowoc F322      Mfr/Model: Mack 213      Brand:      Brand:  
Serial:      Serial:      Grade: 10W40      Type:  
Type: James Mobile      Type: ENGINE, Diesel, Air-Cooled      Lube Time: 100 hr  
Send To: James Automotive      Component Time: 200 hr  
515 Crossville Rd      Sample Date: 7/10/07  
Attn: James Hepler      Analysis Date: 7/12/07  
Lab Sample ID: 0707120001

**Analytical Ferrography Images**

- ⊕ Email or printed reports include Laser Net Fines and Analytical Ferrography images
- ⊕ Email reports are sent automatically to recipients



# Add *Prescient* for Expert, Automated Evaluation

Account: Hepler Molding	Equip Name: Hyd 21	Comp Name: Pump	Lube Mfr:	Filter Mfr:
Application: Industrial	Equip Type: Molding Machine	Comp Type: Hydraulic, Vane	Lube Brand:	Filter Brand:
	Equip Mfr:	Comp Mfr:	Lube Grade: ISO 46	Filter Type:
	Equip Model:	Comp Model:		
	Equip SerNo: 84700	Comp SerNo: 84700-1		

**Critical**

ListView Search Show Graphs < << < > >> > <Eq Eq> Feedback

DIAGNOSTIC ADVISORIES	<ul style="list-style-type: none"> <li>Perform pump DIAGNOSTICS checks</li> <li>Check SEALS for leakage or compromise</li> </ul>
MECHANICAL ADVISORIES	<p><b>CONSIDER INSPECTING FOR ABNORMAL WEAR IN THE FOLLOWING AREAS:</b></p> <ul style="list-style-type: none"> <li>PUMP / PUMP HOUSING</li> <li>VANES</li> <li>BEARINGS</li> <li>BUSHING</li> </ul>
Observations and Reasoning	<ul style="list-style-type: none"> <li>Upward wear metals trend is ALARMING, suggesting close monitoring, or possibly maintenance action</li> <li>Logical Iron Source: Pump Housing, Vanes, Bearings, Rotor, Shaft</li> <li>Logical Copper Source, Vane Pump: Bushing or Bearing Cage, as applicable</li> <li>Abrasives are rated at MINOR level</li> <li>Particle Count is MODERATELY HIGH</li> <li>Logical or Possible Silicon Source: Seal Material</li> </ul>
Lube Maintenance	<ul style="list-style-type: none"> <li>Suggest using off-line or portable filtration to reduce contamination in order to retain the lube for continued service</li> <li>Change filter</li> </ul>
Notes	<ul style="list-style-type: none"> <li>Performing Analytical Ferrography on this sample may help clarify the data, and subsequent decision-making</li> </ul>

	11/15/06	10/04/06	08/09/06	06/24/06
Fe	27	23	19	12
Cr	1	1	1	1
Mo	1	1	0	0
Al	3	2	1	2
Ni	3	2	2	2
Cu	43	9	8	7
Pb	1	2	1	1
Sn	1	1	1	0
Si	37	38	41	41
Na	2	3	4	3

	11/15/06	10/04/06	08/09/06	06/24/06
VIS 40	47.1	43.2	40.0	40.0
PC >4 mic	1542	1266	392	391
PC >6 mic	434	270	47	36
PC >14 mic	92	80	8	7
PC >21 mic	29	31	4	1
PC >38 mic	1	1	0	0
PC >70 mic	0	0	0	0
ISO Code	18/16/14	17/15/14	16/13/10	16/12/10
PQ Index	27	14	16	18

© 2005-2007, Condition Monitoring International, LLC.



- ✦ Specific Mechanical and Diagnostic Advisories
- ✦ Observations and Reasoning behind the Evaluation
- ✦ Lube Maintenance Advisories
- ✦ Clarifying notes for follow-up

**Component-Specific    Accurate    In-Depth    Clear    Consistent**



Laboratory Information Management System

